

Flow Meter SM - 6 / SM - 6 - V



These highly corrosion resistant flow meters are suitable for both liquid and gaseous applications.

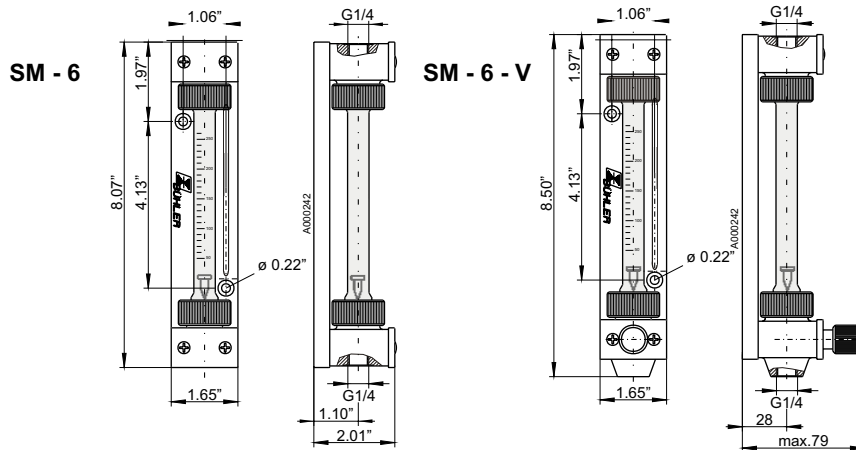
The SM-6-V combines a flow meter with a precision needle valve to regulate and adjust the flow.

In applications where flow monitoring is critical, the flow meter can be equipped with a bi-stable flow sensor. Any deviation from the set point results in an alarm signal.

The flow sensor can be connected to a range of controllers (see data sheet DA 40 0003)

- **Highly corrosion resistant**
- **Reliable construction**
- **Easy maintenance metering tube**
- **Optional flow sensor available**

Dimensions



Application in explosive atmosphere:

There is no Ex-designation on the type plate of the equipment, because they are not within the scope of European Directive 94/9/EC. However the equipment corresponds to the essential requirements of the Directive 94/9/EC. Therefore they can be used in explosive atmosphere (**Zone 1, Group IIC**).

Observe all cautions in the Installation and Operation Manual!

Technical Data: Flow Meter

Ambient temperature	175 °F
Media temperature max.	300 °F
(for part no. 405610 175°C)	
Operating pressure max.	58 psig

Material

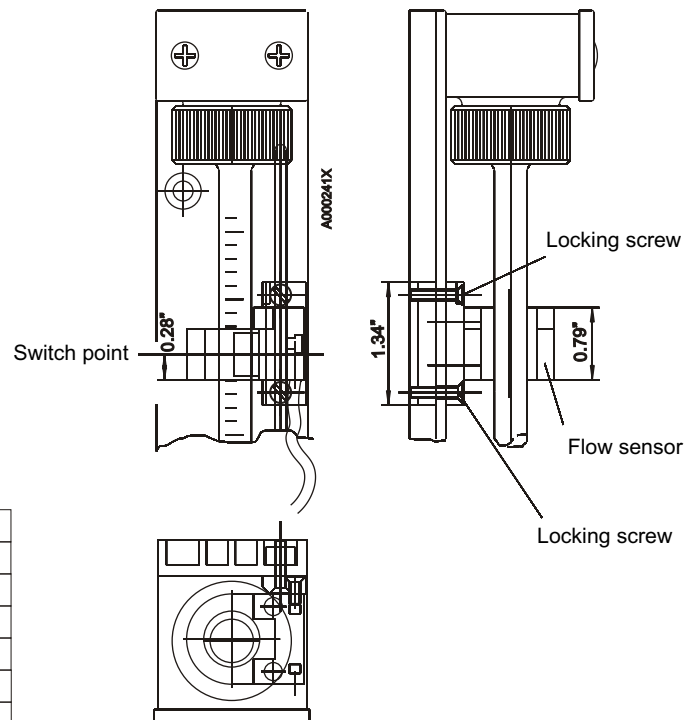
Head	PTFE
Seal	PTFE
Adjusting screw	PVDF / Viton or PCTFE / Perfluorelastomer
Metering tube	Borosilicate glass
Float	Hastelloy C 4 or Optional PEEK with iron core
Union nut	PPS fiberglass reinforced
Base plate	PA

Please indicate with order:

Part no.	Range*
40 56	99
0 0	air 6 - 60 NL/h
0 1	air 10 - 100 NL/h
0 2	air 25 - 250 NL/h
0 3	air 50 - 500 NL/h
0 4	air 80 - 800 NL/h
0 5	water 0,5 - 5 L/h
0 6	water 1,2 - 12 L/h
0 7	water 2,5 - 25 L/h
0 8	water 4 - 40 L/h
0 9	water 6 - 60 L/h
1 0	special range
0	without needle valve
1	valve PVDF / Viton
2	valve PCTFE / perfluorelastomer
S	flow sensor with mounting brackets
-	without flow sensor

Technical Data: Flow Sensor

Protection class	IP 67 DIN 40050
Ambient temperature	-4 °F - 158 °F
Housing material	PBT



Ordering information for flow meter:

The flow meter is delivered with pre-installed flow sensor if the last character of the part number is marked with "S".

Otherwise the flow meter has no flow sensor installed.

* standard measuring tube; air 68 °F 17.4 psig abs; water 68 °F