

# Nivovent 85 RE with Thermotronik 71

## - RENAULT Specification -

The Nivovent 85 RE with Bühler Easyjust technology is a compact combination of freely selectable breather filter, level monitor and precise temperature measurement and display with up to two adjustable alarm outputs.

The flange hole pattern standardised to DIN 24557, Part 2 allows for easy installation and using a small yet highly buoyant float.

The easyjust system makes setting the level switching points extremely easy. It consists of a galvanically gold-plated contact strip with cm scale which holds the cordless level contacts or the temperature contact and temperature sensor. Contact strip and plug-in contacts have a solderless, easy to disconnect connection for easy replacement or modifications and stocking spare parts.

The configuration of the backside of the Nivovent 85 RE is customised to the requirements of Renault. It features two M12 plug bases, a temperature display, preset contacts, and a stilling tube. Per Renault specifications, this device is fully equipped with an approved breather filter with contamination indicator and filler cap.

Please note, there are other Renault-specific versions of the Nivotemp and Nivovent series.

Combination of air breather, level/temperature monitoring

Adjustable temperature alarm outputs

Wireless, adjustable level contacts

Hydac breather filter per CNOMO norm, hole pattern  
DIN 24557, Part 2

Highly visible LED display

Connector standard

Easy installation

Standard length 250, 370 mm



**Technical Data**

**Basic unit**

Operating pressure:	max. 1 bar
Operating temperature:	max. +80 °C
Fluid density	min. 0.8 kg/dm <sup>3</sup>

**Material**

SK 610 float:	Hard PU
Switching tube:	Brass
Flange:	PA

**Level contacts**

min. contact spacing:	40 mm
Max. voltage:	24 V
Max. switching current:	0.5 A
Contact load:	10 VA

\*NC = NC contact/NO = NO contact, all data with empty tank

**Breather filter**

**Hydac BF 7/-Cnomo**

Display: optic analog vacuum display with manual reset

Display range: 0.35 bar = 100 %

Filter fineness 3 µm

Hole pattern per DIN 24557/T2

Accessories: Filler cap

**Thermotronic 71**

Temperature display range: approx. -20 to +120 °C/4° to 248 °F

Temperature alarm range: 0 to +99 °C or 32° to 178 °F

Programmable switching points: max. 2

Housing version: PA, IP65

Display: 4-digit seven segment LED display

Starting current input: approx. 140 mA over 100 ms

Current input during operation: approx. 30 - 50 mA

Supply voltage: 24 V DC ± 10%

Output: PNP (NC)

Ambient temperature: 0 °C to +70°C

Accuracy: 1 % of full range

Resolution: 1 °C/2 °F

Operation: via 3 keys

Temperature sensor: Pt100

**General Description of Thermotronic 71**

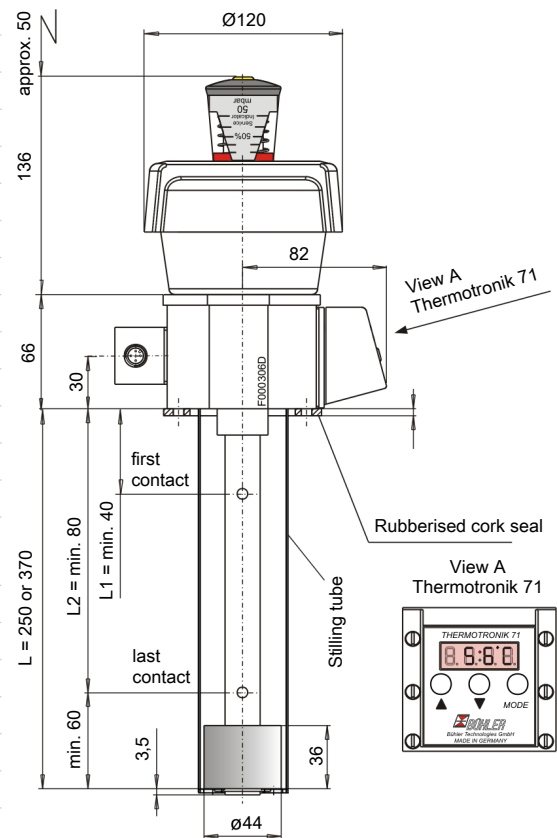
The Thermotronic 71 is a combined microprocessor controlled temperature display and control unit with one input for Pt100 temperature sensors. The temperature is displayed on a four digit, seven segment LED display. The device also indicates a sensor defect or cable break on the display.

The Thermotronic 71 is programmed via three buttons on the front panel. The settings are protected against unauthorized operation by key lock

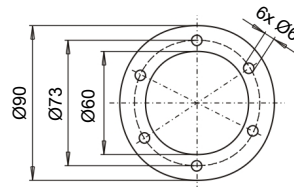
**Ordering Instructions**

Item no.	Plug	Display	Length (L)	L1 =	L2 =	Temperature contact T1	Temperature contact T2	Stilling tube
1085900111	2xM12	Yes	370	300 NO	No	No	No	Yes
1085900113	2xM12	Yes	370	300 NO	No	T1 = 70 PNP (NC)	No	Yes
1085900117	2xM12	Yes	250	190 NO	No	No	No	Yes
1085900118	2xM12	Yes	250	190 NO	No	T1 = 70 PNP (NC)	No	Yes

**Dimensions**



Plan view



Connector 2xM12

